



崇正爱心家长团

SJKC Chong Cheng

PIBK (Pasukan Ibu-Bapa dan Komuniti)

27 Dec 2018

校方与家教协会于2015年成立了爱心家长团。

PIBK was established by the school and Parent Teacher Association in 2015.



叔叔请你吃糖果...

3男校外以糖果引诱

幸好小学生机智逃跑!

爱心家长团的主要^{义务}服务范围

Major **Voluntary** Roles of PIBK

- 舒缓学校守卫不足的问题
 - To ease the problem of insufficient school guards
- 保卫学生在校园的安全 (禁止陌生人进入校园)
 - To safeguard the pupils (Forbid unregistered entry)
- 确保学生有个专心上课的环境 (禁止家长和陌生人进入校园里游荡, 干扰和占住食堂座位)
 - Ensure an attentive environment for the pupils (Forbid parents and strangers from wandering, interfering and occupy canteen seats)
- 保卫学生上下学的安全 (指挥和缓解交通)
 - To safeguard the pupils at school starts and ends time (To help relief traffic congestion)

[2018] 崇正爱心家长团 - 会员结构图
 [2018] PIBK CHONG CHENG – ORGANIZATION STRUCTURE

Last updated: Dec 25th 2018



顾问: 陈慧兼校长
 Penasihat: Pn. Tan Wei Kuan (Pengetua)



总协调员: 张华苇先生 (家协)
 Ketua Penyelaras: Teoh Wah Wei (PIBG)



协调员 / Penyelaras:
 Nur Ezlia Aronratana



协调员 / Penyelaras:
 Liang Jenn Shyang

小组组员 TEAM MEMBERS



Yeoh Theam Huat



Teoh Gee Ming



Cindy Chuah



Lee Siew Yoke



Lilian Tan



Ng Pui Fun



Ooi Bee Lee



Tan Li Ling



Ooi Kok Keong



Kok Sook Kuan



Ng Siew Hoon



Shareen Sim



Khoo Ai Nee



Wong Fong Choo



Ang Hoon Hong



Yeoh Hooi Peng



Phoemsri
 (Ms. Chong)



Owi Tian Hon



Lim Sau Hooi



Wah Eng Hoe



Yee Kwong Wah



Tan Siang Lin



Yeoh Weng Chin



Danish Chong



Goh Yeow Shen



Punidha



Tan Wei Wei



Chow Kit Lai



Nicole Chong



Hiew Yen Peng



Nani



Sulyana



Eric Chee



Lau Siew Fui



Lim Yen Nee



Fakhru Naim Lim



Leow Chin Hing



Wong Ai Ling



Ch'ng Kean Siang



Hor Su Wei



Yu Hooi Ching

学生的安全是校方及家长的共同责任

Students' Safety is Responsibility of school & Parents

2015 年西南区警察局总部主讲“确保学生在校安全”讲座会

2015 Talk on Student Safety by Barat Daya Police Headquarter



校前正门

Front - Main Gate

校前小门

Front - Small Gate

校前侧门

Front - Side Gate

办公室 (早)

办公室 (午)

校门

School Gates

食堂

礼堂

校后正门

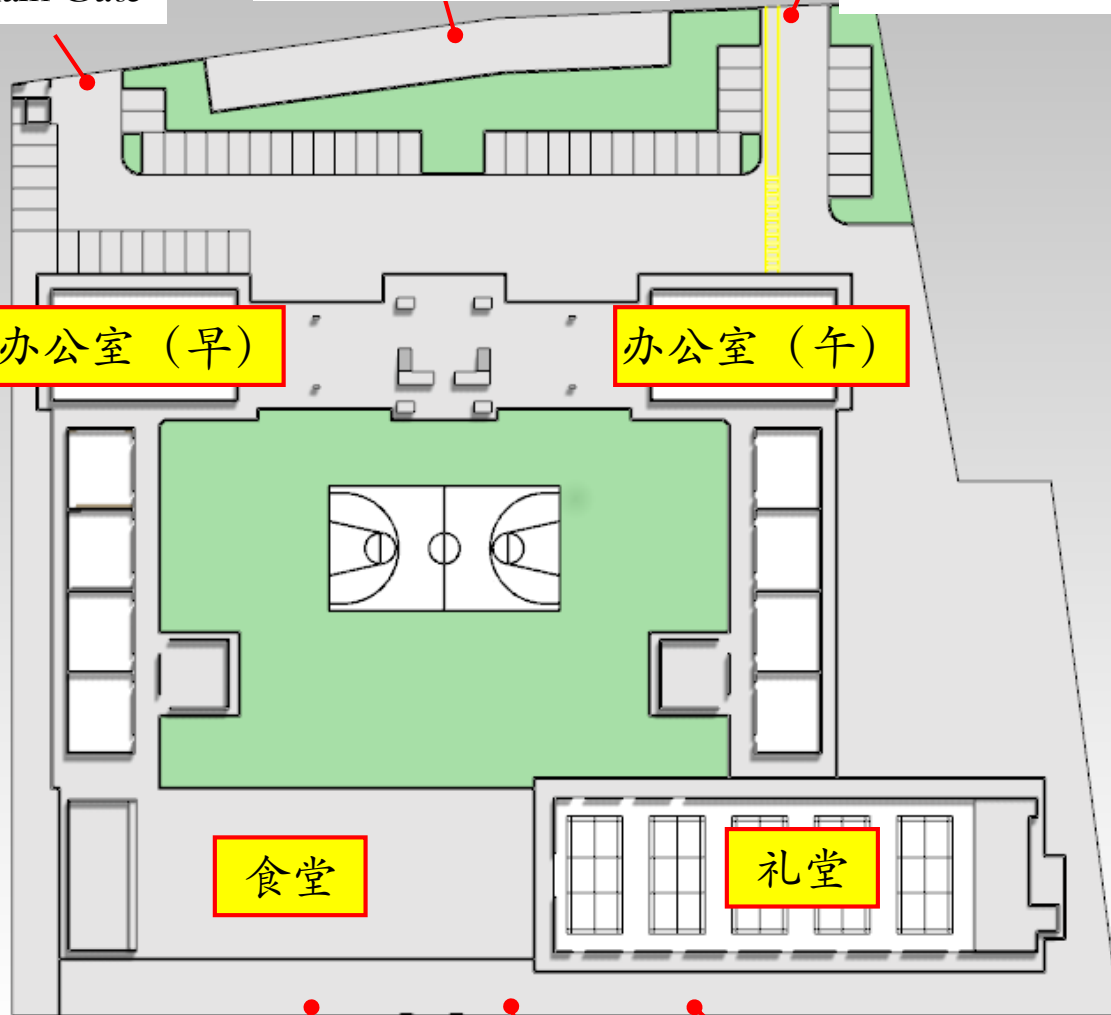
Rear - Main Gate

校后小门

Rear - Small Gate

校后侧门

Rear - Side Gate



值日岗位（校前侧门）

Duty location (Front Gate)



值日岗位（校后正门）

Duty location (Rear Gate)



值日岗位（校后小门）

Duty location (Rear Small Gate)



校前 - 正门

Front - Main Gate



所有要进入校园的访客必须到校前正门向守卫登记

All visitors entering the school must register at Front Main - Gate

校前 - 小门

Front - Small Gate

校前小门是乘坐校车学生的专属出口

Front - Small Gate is the exit exclusively designated for school buses pick-up



校前 - 侧门

Front - Side Gate

校前侧门是乘坐校车学生的专属入口

Front - Side Gate is the entrance exclusively designated for school buses drop-off



校后 - 正门

Rear - Main Gate



校后正门是乘坐家长车学生的专属入/出口

Rear Main Gate A is exit exclusively designated for parent's car drop-off and pick up

2013年的市政局限时单程车道交通指令

Periodic One Way Street Order by MPPP in 2013

20. Mar. 2013 8:04 MPPP JABATAN KEJURUTERAAN No. 6901 P. 1

MAJLIS PERBANDARAN PULAU PINANG
 JABATAN KEJURUTERAAN
 FARAS 11, KOMTAR
 JALAN PINANG
 10475 PULAU PINANG
 Telefon : 04-2593030
 Faks : 04-2611990

Ruj. surat: JK(J) /MESY/5(2)/12
 Ruj. kam: _____
 Tarikh: 21 Mac 2013

Guru Besar,
 SJK(C) Chong Cheng,
 Sungai Ara,
 11800 Pulau Pinang
 6431495
 Faks : 04-6462624

Tuan,

PENUKARAN ALIRAN LALULINTAS DUA HALA KE SEHALA DI SEBAHAGIAN TINGKAT SUNGAI ARA 1, PULAU PINANG.

Dengan hormatnya saya adalah diarah merujuk kepada perkara di atas.

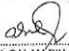
2. Adalah dimaklumkan bahawa Majlis telah meluluskan untuk menukar aliran lalulintas dua hala ke sehalah di Sebahagian Tingkat Sungai Ara 1, Pulau Pinang. Waktu pelaksanaan jalan sehalah adalah seperti berikut :-

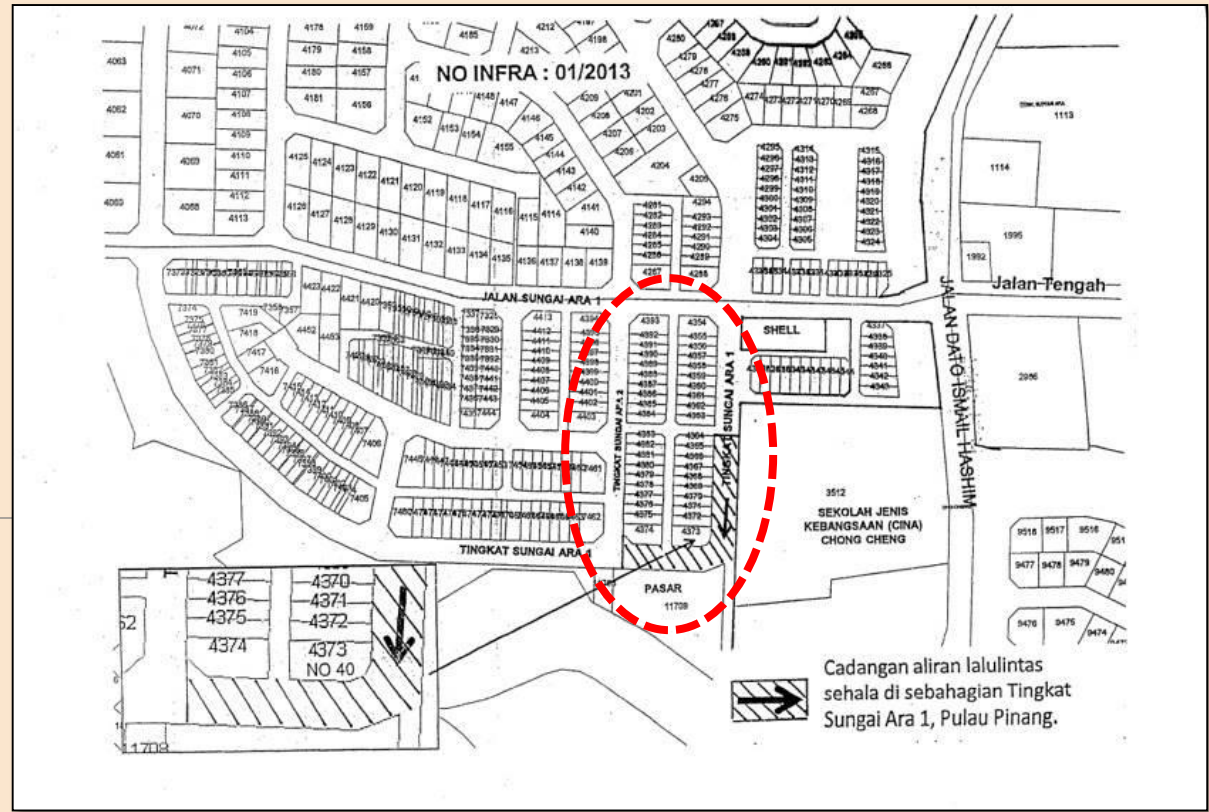
- 6.30 pagi – 6.00 pagi
- 12.30 hari – 2.00 petang
- 6.00 ptg – 7.30 malam

3. Daripada keputusan semasa lawatan tapak yang diadakan pada 14 Mac 2013, cadangan jalan sehalah akan dilaksanakan mulai 1 April 2013 jam 6.30 pagi. Seselatan pelan yang menunjukkan arah aliran lalulintas sehalah yang dicadangkan adalah disertakan.

4. Tujuan sistem jalan sehalah dilaksanakan adalah bagi mengurangkan kesesakan dan melincirkan aliran lalulintas serta mengurangkan masalah konflik dan kemungkinan lalulintas di kawasan tersebut semasa waktu masuk dan keluar persekolahan.

5. Pihak sekolah hendaklah menyediakan anggota RELA untuk mengawal lalulintas semasa pelaksanaan jalan sehalah ini.

Sekian, terima kasih.
 "BERKHIDMAT UNTUK NEGARA"
 Saya yang menurut perintah,

 (ABDUL SALAM BIN ABDUL KARIM)
 b.p. Pengarah Kejuruteraan



Cadangan aliran lalulintas sehalah di sebahagian Tingkat Sungai Ara 1, Pulau Pinang.

交通流图

Traffic Flow Diagram



学校周边的公共停车位

Public Car Park Around School

鼓励家长们把车子停泊在学校周边的公共停车场后步行到学校后门。
Parents are urged to park at nearby public parking places and walk to the rear gate of the school.



校门规矩

School Gate Regulation



禁止外人在没有登记的情况下进入学校

Outsiders are refrained from entering into school without registration

校后正门接送学生

Drop Off / Pick Up at Rear Main Gate



只限连接性车子排列，禁止把车子泊在黄线区

Sequential line up for pick-up and drop-off, do not park in yellow line zone

单程道路线

One Way Traffic



学校后面的道路是限时单行道，从相反方向来的汽车
将导致交通堵塞

The road behind school is a periodic way street, the car from opposite direction
would cause traffic congestion

请不要把车子停泊在行人走道

Do not park your car at the pedestrian walkway



温馨建议

Friendly Advice

- 家长们请给予充分的配合,合作与耐心
 - Parents do kindly give the full cooperation and patience.
- 遇到突发事件时,家长们要守望互助
 - Parents do kindly help each other and make a supportive atmosphere when an unexpected incident happens.
- 家长们请提醒孩子放学时,要在校园内集合地等候, 必须逗留在老师或爱心家长所看得到的范围内
 - Parents do kindly remind the child to stay at the designated waiting area that visible by teachers or PIBK in the schoolyard while waiting for home.

爱心家长服务时间

Duty Hours of PIBK

中午团队 Afternoon Crew	服务时间 Duty Hour
星期一至五 Monday - Friday	12:40PM ~ 1.30PM

上午班放学时间 Morning Class Ends	下午班上学时间 Afternoon Class Starts
星期一至星期四 Monday to Thursday 1:30pm	1:35pm
星期五 Friday 12:30pm / 1:30pm	

傍晚团队 Evening Crew	服务时间 Duty Hour	下午班放学时间 Afternoon Class Ends
星期一与星期二 Monday & Tuesday	6:40PM ~ 7.10PM	6:50pm
星期三至星期五 Wednesday to Friday	6:10PM ~ 6.40PM	6:20pm

崇正爱心家长团 - 保安与交通小组

SJKC Chong Cheng PIBK Team

Safety & Security Group

请加入我们!

Please come join us!

